

StepRight® Modular Matting



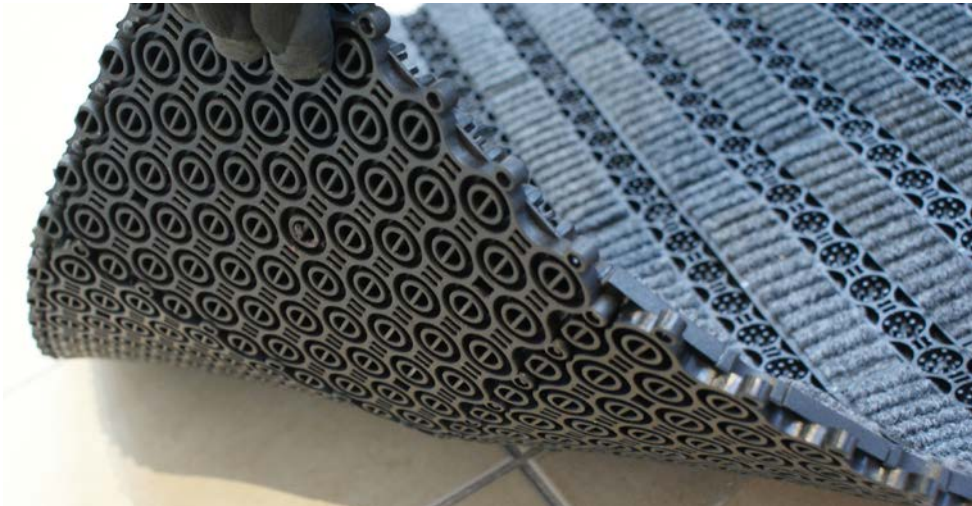
The intelligent design combination of protruding finger like rubber nodules and carpet insert, make StepRight® Modular extremely hard wearing and effective, removing dirt and water from footwear when approaching from all directions.

StepRight® Modular is the smart new entrance matting from CTA, designed with multiple 200x200mm modules manufactured from heavy duty plastic. StepRight® Modular is available in two profiles, a Carpet and Edge Module. The Edge Module has been designed to allow precise sizing of the installation without having to cut through a Carpet Module. It also frames the mat for overall aesthetics.

Available with Black, Grey, Red, Ocean blue and Pearly Green Carpet inlay. StepRight® Modular is also stiletto and wheel chair friendly and complies with AS1428.

KEY FEATURES

- Modules can be easily replaced if required
- Heel proof construction to prevent heels from being trapped
- 200mm x 200mm modules to fit almost any location
- Carpet inlays are available in 5 attractive colours
- Suits recess depths of 12 to 16mm
- Reducing strip is also available for surface mounted options.



MATERIAL

Manufactured from heavy duty plastic for the highest possible level of wear resistance.

APPLICATIONS

- At entry points to buildings, to remove moisture and grit

DIMENSIONS

Standard 200mm x 200mm modules, 16mm thick. 2 sqm per box.

INSTALLATION METHOD

Check the mat recess subfloor is level, sound and clean. Click modules together and cut edge modules to size if required. If used in a heavy traffic area - it may be necessary to secure the installation with positioning screws to reduce movement during service.

COLOURS



COMPLIANCE

All CTA products conform with the requirements of the Australian standards and are tested by a NATA certified laboratory. Please consult with CTA for relevant test reports:

- AS1428:2009 Design for access and mobility
- AS4586:2013 Slip resistance classifications for new pedestrian surface materials
- NCC - National Construction Codes

LUMINANCE CONTRAST

Please view the CTA Luminance Brochure for details or contact your CTA representative to discuss or request an onsite luminosity test.

WARRANTY

CTA provides a comprehensive warranty, in accordance with our published warranty statement which can be viewed on www.ctagroup.com.au

CTA COMPLETE CARE MAINTENANCE

Asset owners have a Duty of Care responsibility to maintain access product within design performance parameters. CTA offers a fully integrated maintenance program which includes regular scheduled maintenance and replacement of worn components where necessary. Please contact your CTA representative for information on our "Complete Care Program."

CTA INSTALLERS

CTA's accredited installers are available to do the installation work for you - with short turnaround times and guaranteed workmanship. Our installation team is the largest and most experienced in the nation, so you can rest assured you are in safe hands.

MORE INFORMATION

Product Installation, list of Approved Products and Material Safety Data Sheets are available on request.

CALL CTA ON 1300 282 282
TO ARRANGE A MEETING WITH A SALES CONSULTANT

VICTORIA | NEW SOUTH WALES | QUEENSLAND | WESTERN AUSTRALIA

